

# St. Louis Community Information Network



City of St. Louis Information Technology Services Agency (ITSA)

<http://stlouis.missouri.org> or <http://www.stlouiscity.com>

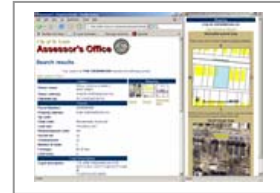
## 2004 Highlights

Here is a brief review of the past year at the City of St. Louis Community Information Network.

**New Applications & Websites.** CIN staff in partnership with many City Departments and their staff were able to accomplish the following:

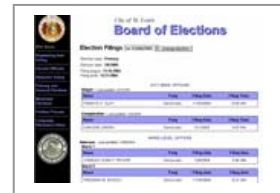
- a) **Assessor Property Database and Address Locator.** Leveraging on geographic information systems (GIS) development completed by the Planning and Urban Design Agency Research Department, the Assessor's property information was enhanced to include an interactive parcel map and aerial map of selected properties.

<http://stlcin.missouri.org/assessor/>



- b) **Board of Election, Election information posting.** Citizens can now follow election filings, ballot issues, and election results on line shortly after the information is made available.

<http://stlouis.missouri.org/citygov/electionbd/>



- c) **City Journal posting process automated for the Supply Division.** The City Journal is the weekly publication of the City of St. Louis, informing the public of new laws, ordinances, and the general business of government. Changes were made to streamline the on-line publishing process for the staff of the Supply Division, Multigraph Section.

<http://stlcin.missouri.org/cityjournal/>

- d) **Education Resource Page.** The Mayor's office requested this page to share information on the range of education options available to City residents. Visitors can enter their home address and find their child assigned school, search a list of education contacts, read education related news and events, and exhaustive list of related links.

<http://stlcin.missouri.org/education/>



- e) **Newsletters and subscriptions.** Newsletters were created for the Mayor's Office, the Office of the Comptroller, Education Topics, Newsgram, CityTV10 and the CIN Internet User Group. Subscribers will be notified with an email that includes the text of newsletter and a link to the webpage with the news item.

<http://stlcin.missouri.org/newsletters/index.cfm>

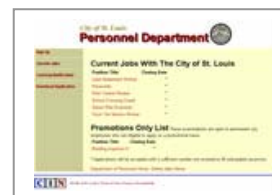


- f) **Pay Parking Tickets Online.** The Treasurer's Office and the City's Parking Violation Bureau have made this new service available.

<http://stlouis.missouri.org/citygov/parkingviolation/>

- g) **Personnel Department Online jobs.** Applicants interested in working for the City have been able to apply online since 1999, this new redesign application will allow applicants to save their profile. Returning applicants will only have to update their profile, education and employment history before submitting their application.

<http://stlcin.missouri.org/OnlineJob/jobs.cfm>





- h) **Personnel Department Retirement Section.** A new webpage was developed including a pension calculator. Current and past employees can now calculate their pension benefits online.  
<http://stlcin.missouri.org/retirement/>
- i) **Problem Properties Management Application.** This application is an internal application dedicated to facilitate information sharing among City Department involved in addressing problem properties.
- j) **Restaurant Ratings.** Visitors can now search an eating establishment in the City of St. Louis and review the Health Department ratings information. The average three year score as well as the latest inspection rating. The application is searchable by neighborhood, by eating establishment, by score, and by zip code.  
<http://stlcin.missouri.org/pubhealth/restaurantratings/>

**Outreach.** CIN's mission to support the community continued this year.

- a) **Dial-up Access Provided To Area Youth.** Our partnership with the Youth and Family Resource Center, Computer Village, Byte Works and the University of Missouri Science Education Department resulted in 260 young people completing computer competency training. Successful completion of the training earned them a free computer provided from our partners and a dial-up and email account from the City of St. Louis CIN.
- b) **Internet User Group Established.** Representatives of City departments and agencies and affiliate organizations are now meeting regularly to discuss progress, goals, and work jointly on solutions.
- c) **Neighborhood Webpages.** CIN successfully recruited 15 new volunteer webmasters to maintain selected neighborhood web pages hosted on the CIN. These volunteers work with neighborhood based organizations to post relevant information about their community  
<http://stlouis.missouri.org/neighborhoods/>
- d) **SLACO Conference.** Presented workshop at the annual SLACO conference to demonstrate and help community leaders use electronic resources available on the St. Louis CIN website.
- e) **Web Usability Study.** In preparation of a redesign effort of the website, CIN staff engaged in a web usability study that resulted in nearly 900 people (882) responding to the primary survey instrument. The effort was very successful and provided very good information to guide us through the redesign effort. 49% of responded participated in a "part two" of the survey, an exercise in categorizing topics. Nearly 200 of the respondents responded to "part three" and indicated their interest in further involvement in the redesign effort.

**Selected Goals for 2005** – Every year CIN sets forth goals for the New Year. In 2005 we will strive to:

- Deploy a new design for the site
- Increase number of online services including financial transactions
- Select, acquire and deploy a content management solution to streamline the ability of City employees and affiliates to contribute content to the site.

We wish to thank all who support, contribute, and use the CIN site. Your hard work, good ideas, and creativity are critical to keeping the site a useful and relevant resource for the City of St. Louis.

Happy Holidays!

Sonya Pelli  
City of St. Louis Community Information Network  
Information Technology Services Agency (ITSA)