

# **NON-DEPARTMENTAL**

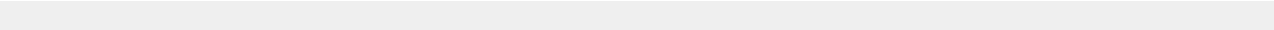
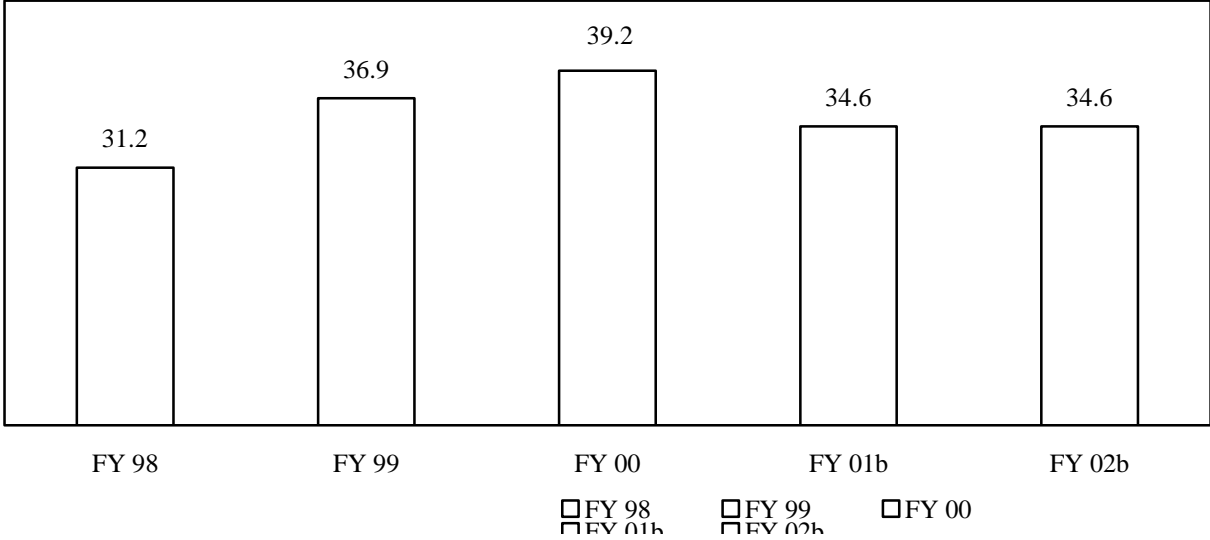
# NON-DEPARTMENTAL

<b>Budget By Division</b>	<b>Actual FY00</b>	<b>Budget FY01</b>	<b>Budget FY02</b>
190 City Wide Accounts	39,209,589	34,637,700	34,622,783
<b>Total General Fund</b>	<b>\$39,209,589</b>	<b>\$34,637,700</b>	<b>\$34,622,783</b>
Riverfront Gaming Fund	3,824,827	4,900,000	4,650,000
Convention and Tourism Fund	3,562,500	4,000,000	4,300,000
<b>Total Department All Funds</b>	<b>\$46,596,916</b>	<b>\$43,537,700</b>	<b>\$43,572,783</b>

<b>Personnel By Division</b>	<b>Actual FY00</b>	<b>Budget FY01</b>	<b>Budget FY02</b>
190 City Wide Accounts	0.0	0.0	0.0
<b>Total Department All Funds</b>	<b>0.0</b>	<b>0.0</b>	<b>0.0</b>

# NON-DEPARTMENTAL

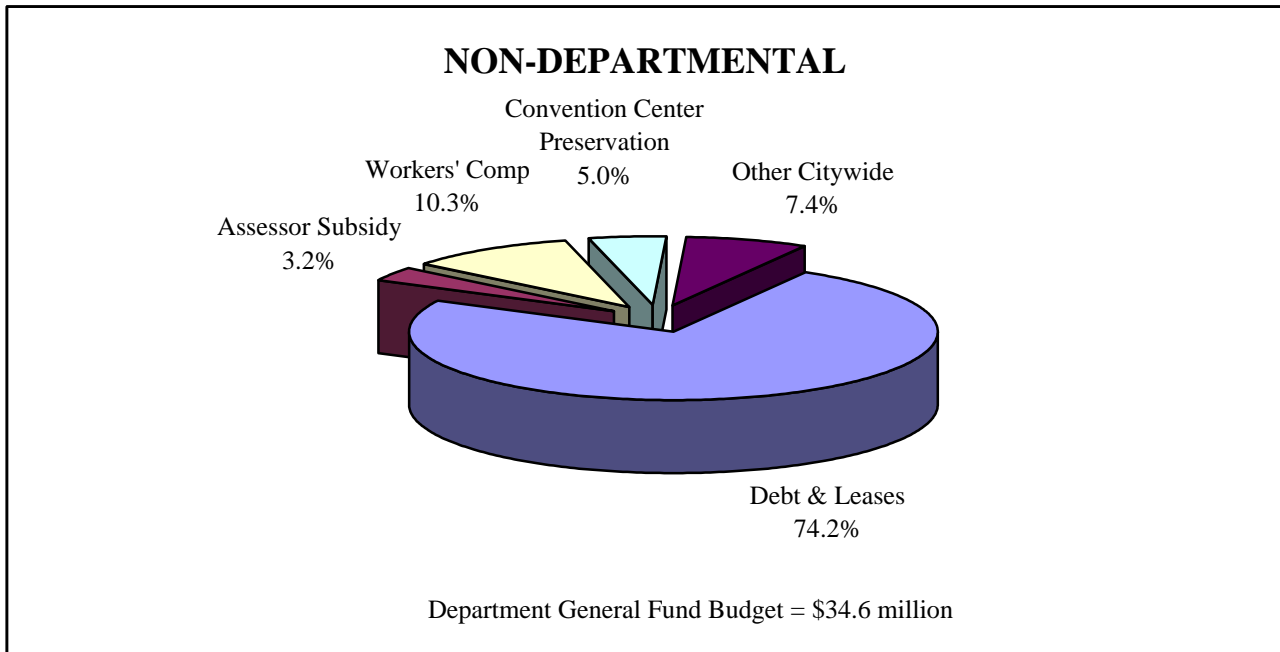
## NON-DEPARTMENTAL



### Major Goals and Highlights

- o Increase allocation to Assessor's Office to eliminate potential deficit in Assessment fund.
- o Provide \$600,000 in public safety gaming funds to pay debt on gaming relocation agreement
- o Provide the Convention and Visitor's Commission with \$2.0 mil. to maintain the City's convention center
- o Maintain sufficient funding for the purchase of \$150,000 in safety equipment/apparel for City employees

# NON-DEPARTMENTAL



o Meet all general fund commitments for payments on existing and proposed lease debt

o Allocate sufficient funds to meet workers' compensation requirements in fiscal year

Department: Non-Departmental  
 Division: 190 City Wide Accounts

**Division Budget**

**Services Provided & FY02 Highlights**

The City Wide Accounts include funding for general purpose items not specific to any one department. These include unemployment compensation, workers' compensation, etc. The City Wide Accounts also contain the City's share of lease payments such as the Kiel Center and Convention Center expansion projects. Corrections facilities lease payments total \$5.4 mil. This amount is supplemented by \$4.9 mil. in capital funds to pay debt on the City's new Justice Center now under construction. Combined net debt service payments for the Justice Center will total \$10.3 mil. in FY02. Total debt payments for the Convention Center are expected to increase \$446,000. This rise reflects the regular increase in the debt service payment schedule. The Civil Courts lease payment has been budgeted at \$1.1 mil., which when supplemented with \$0.9 million in capital funds, brings the total debt service on this project to \$2.6 mil. The City-Wide Accounts also includes a \$550,000 reduction in payments to SLDC, thus eliminating the general fund subsidy to that agency. The Assessor's Office subsidy is budgeted at \$1.8 mil., an increase of \$250,000. This reflects normal increases in the cost of operation of that office as well as the depletion of previous surpluses in the Assessment fund that were used to subsidize operations in the past. The Citywide Gaming Fund budget includes payments of \$4.0 mil. to the capital fund, \$50,000 to the state's Compulsive Gambler's Fund and \$600,000 to the City Port Authority to pay debt on a gaming facility relocation note. The Port Authority issued the \$2.4 mil. note in FY00 as part of the effort to relocate the Admiral gaming facility to its new location just north of Laclede's Landing on the riverfront.

<b>General Fund Budget By Expenditure Category</b>	<b>Actual FY00</b>	<b>Budget FY01</b>	<b>Budget FY02</b>
Personal Services	4,408,882	4,400,000	4,475,000
Supplies	137,227	150,000	0
Equipment \ Leases	16,702,588	17,324,000	17,770,000
Contractual Services	447,400	205,000	205,000
Fixed and Miscellaneous Charges	10,526,538	5,533,700	5,147,783
Debt Service Charges	6,986,954	7,025,000	7,025,000
<b>Total General Fund</b>	<b>\$39,209,589</b>	<b>\$34,637,700</b>	<b>\$34,622,783</b>
Riverfront Gaming Fund	\$3,824,827	\$4,900,000	\$4,650,000
<b>Total Budget All Funds</b>	<b>\$43,034,416</b>	<b>\$39,537,700</b>	<b>\$39,272,783</b>

**Number of Full Time Positions**

Total	0.0	0.0	0.0
Other	0.0	0.0	0.0

Department: Non-Departmental  
 Division: 160 Convention and Tourism Fund

**Division Budget**

**Services Provided & FY02 Highlights**

The Convention and Tourism (C&T) fund was established to foster and promote the City's convention and tourism industry. It is funded by a 1% tax on restaurant gross receipts. Expenditures from the fund are approved by members of the C&T Board, which consists of the Mayor, the Comptroller and the President of the Board of Aldermen. In FY02, \$3.95 mil. in receipts to the Convention and Tourism Fund will be allocated solely to the City's General Fund to pay for current debt and other expenses related to the convention center.

<b>Budget By Expenditure Category</b>	<b>Actual FY00</b>	<b>Budget FY01</b>	<b>Budget FY02</b>
Personal Services	0	0	0
Supplies	0	0	0
Materials	0	0	0
Equipment	0	0	0
Contractual Services	0	0	0
Fixed and Miscellaneous Charges	3,562,500	4,000,000	4,300,000
Debt Service Charges	0	0	0
<b>Total</b>	<b>\$3,562,500</b>	<b>\$4,000,000</b>	<b>\$4,300,000</b>

**Number of Full Time Positions**

Total	0.0	0.0	0.0
Other	0.0	0.0	0.0

