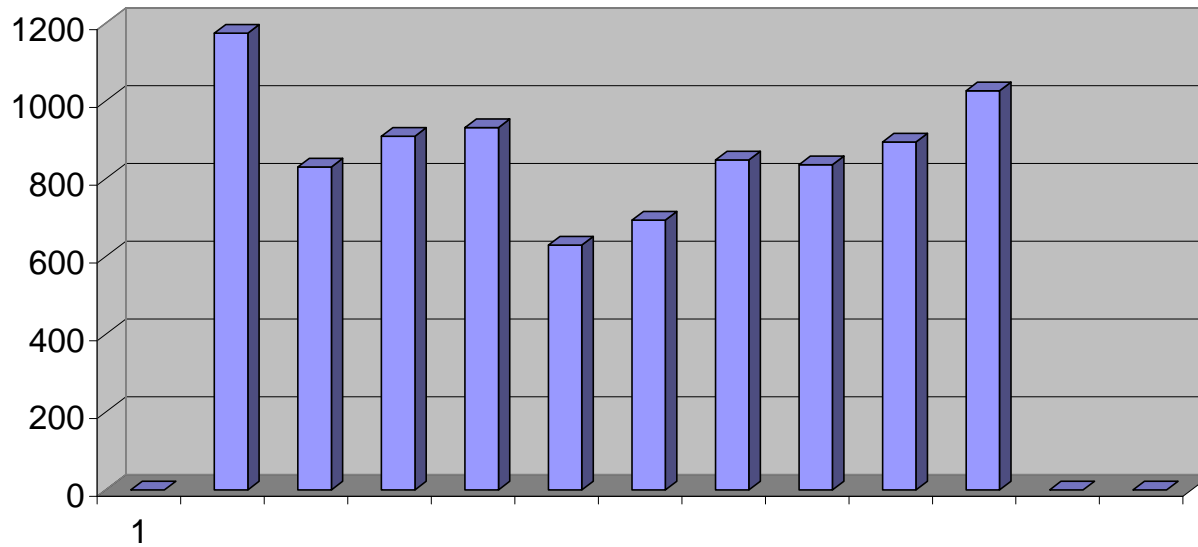


LEAD POISONING INSPECTIONS FY09

MONTH	REFERRALS RECEIVED	UNITS INSPECTED	UNITS CITED	RE-INSPECTIONS	COURT REFERRALS	TOTAL INSPECTIONS
JUL	168	163	133	1011	4	1174
AUG	144	115	101	715	1	830
SEP	159	117	102	792	18	909
OCT	196	112	95	819	4	931
NOV	44	132	99	497	5	629
DEC	161	95	78	598	1	693
JAN09	85	73	65	775	2	848
FEB	140	105	92	731	9	836
MAR	190	103	87	791	9	894
APR	150	108	99	918	3	1026
MAY						0
JUN						0
TOTAL	1437	1123	951	7647	56	8770

TOTAL LEAD INSPECTIONS - FY09



LEAD INSPECTION SERVICE REQUESTS BY SOURCE FY09

MONTH	SECTION 8	EBL	DAY CARE	CSB	HCD	ENVIRONMENTAL	HOT LINE	FAMILY COURT	BJC OB CLINIC		JCRC	5-9 PROGRAM	MULTI-UNIT	OTHER	TOTAL
									HEAVY METAL						
JUL	0	35	0	38	1	0	41	0	8	5	21	13	6	168	
AUG	0	24	0	14	0	4	56	0	21	1	4	19	0	143	
SEP	0	50	0	18	1	0	63	1	7	1	11	4	3	159	
OCT	0	45	0	40	0	2	53	1	43	7	0	1	4	196	
NOV	0	25	0	21	0	0	24	0	38	29	0	0	0	137	
DEC	0	41	1	45	1	0	27	0	0	0	1	33	12	161	
JAN06	1	17	0	25	5	0	18	0	1	0	0	9	9	85	
FEB	1	26	0	34	2	0	20	0	21	10	25	13	0	152	
MAR	0	9	0	53	4	0	30	0	19	3	7	58	7	190	
APR	1	15	0	68	4	0	31	3	7	2	3	9	7	150	
MAY															
JUN															
MONTH	SECTION 8	EBL	DAY CARE	CSB	HCD	ENVIRONMENTAL	HOT LINE	DRUG COURT	BJC OB CLINIC	JCRC	5-9 PROGRAM	MUTL-UNIT	OTHER	TOTAL	
TOTAL	3	287	1	356	18	6	363	5	165	29	101	159	48	1541	

LEAD INSPECTION REQUESTS BY SOURCE FY09

