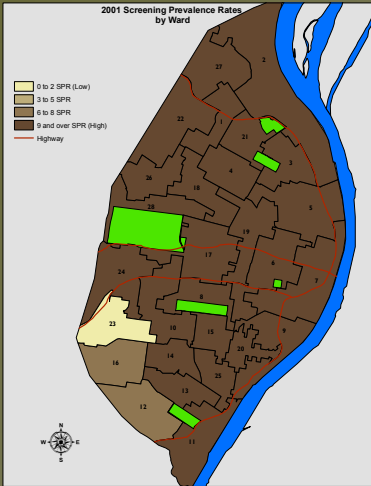
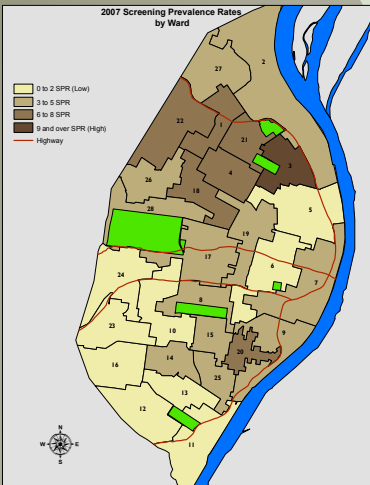
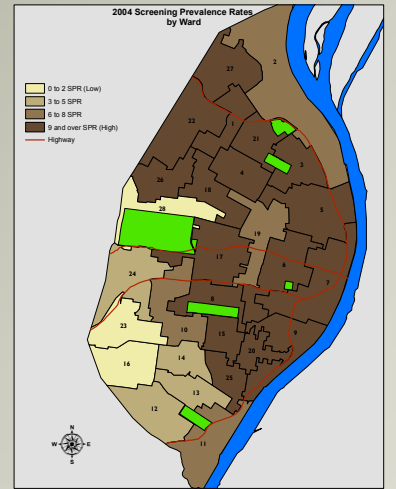
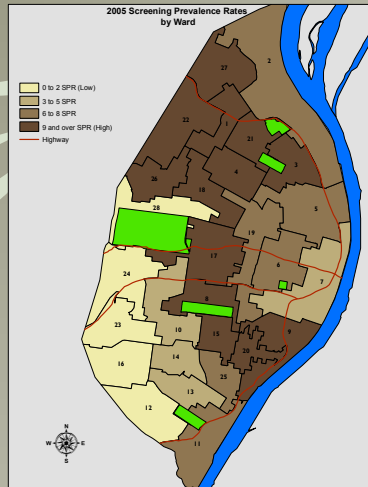
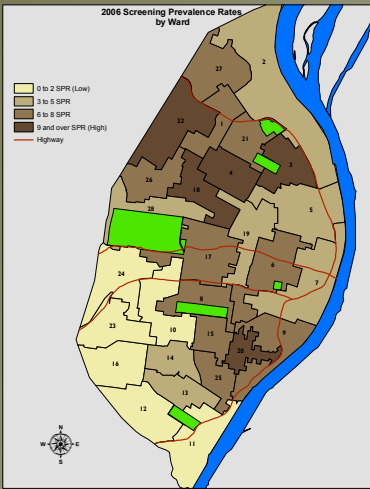
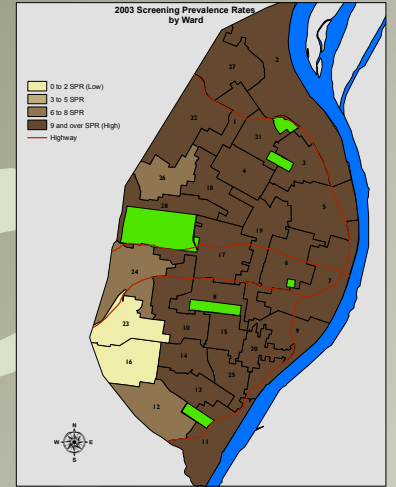
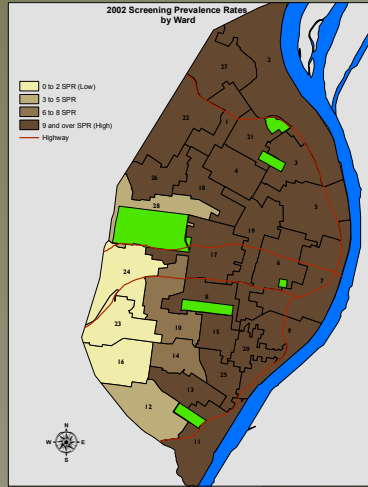


Reduction in the Childhood Lead Poisoning Prevalence Rate City of Saint Louis 2001-2007



2001



2007

Legend for Maps

- 0 to 2 SPR (Low)
- 3 to 5 SPR
- 6 to 8 SPR
- 9 and over SPR (High)
- Highway

Childhood lead poisoning has been reduced dramatically in the City of St. Louis. The series of maps above shows the progression of the City's reduction from 2001-2007 by City Wards.

It is important to note that in 2001, only three Wards in St. Louis City had rates that were not in the highest category. By 2007, only one ward remained in the category of greatest concern; and that one by the slimmest of margins.